

YOU ARE NOT ALONE, YOUR CONSULATE ASSISTS YOU



What is the consulate?

The consulate is a Mexican government office located in a town abroad. Its mission is to protect your rights and your integrity.



Who does it assist?

All Mexicans! Regardless of your migratory situation, you can go to the consulate to request protection and advice.

How can it help me?

The Consular Protection area is in charge of safeguarding your rights when you are abroad. You can request assistance for different matters:



Migratory



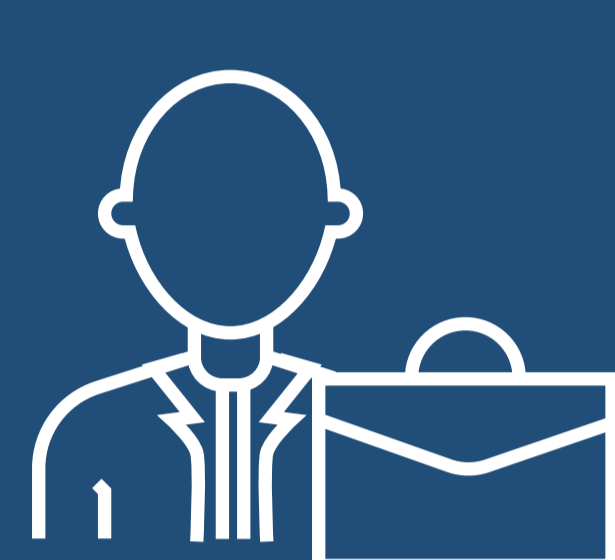
Human Rights



Criminal Law



Administrative



Labor



Family

What services can the consulate offer?

You can perform the following administrative tasks at the consulate:

Documentation:	<ul style="list-style-type: none"> · Passport · Consular Registration · Voting card · Proof of Military Service 	
Civil Registry:	<ul style="list-style-type: none"> · Birth Registry · Marriage · Certified copies of Birth Certificates · Death Certificate 	
Notary Public	<ul style="list-style-type: none"> · Powers of Attorney · Testaments 	

What can the consulate NOT do?

Please consider that the consulate's responsibilities are limited, so there are matters in which it cannot intervene. For instance, it cannot:



- * Help release a person detained due to infraction or crime
- * Take responsibility for the payment of fines
- * Take responsibility for the payment of acquired debts
- * Take responsibility for the payment of medications or medical assistance, other than the guidelines stipulated
- * Regularize the migratory situation of a Mexican person before the local authorities, extend his/her visitor's permit, or process visas for other countries
- * Request entry for a fellow citizen against the regulations set forth by the authorities
- * Find jobs for people or act as guarantor for leasing agreements
- * Find accommodation
- * Obtain, exchange or recover flight tickets
- * Cover legal expenses other than what is stipulated

How can I get in touch with the consulate?

Find the consulate that is closest to you. You can find this information in the following [WEBSITE](#).